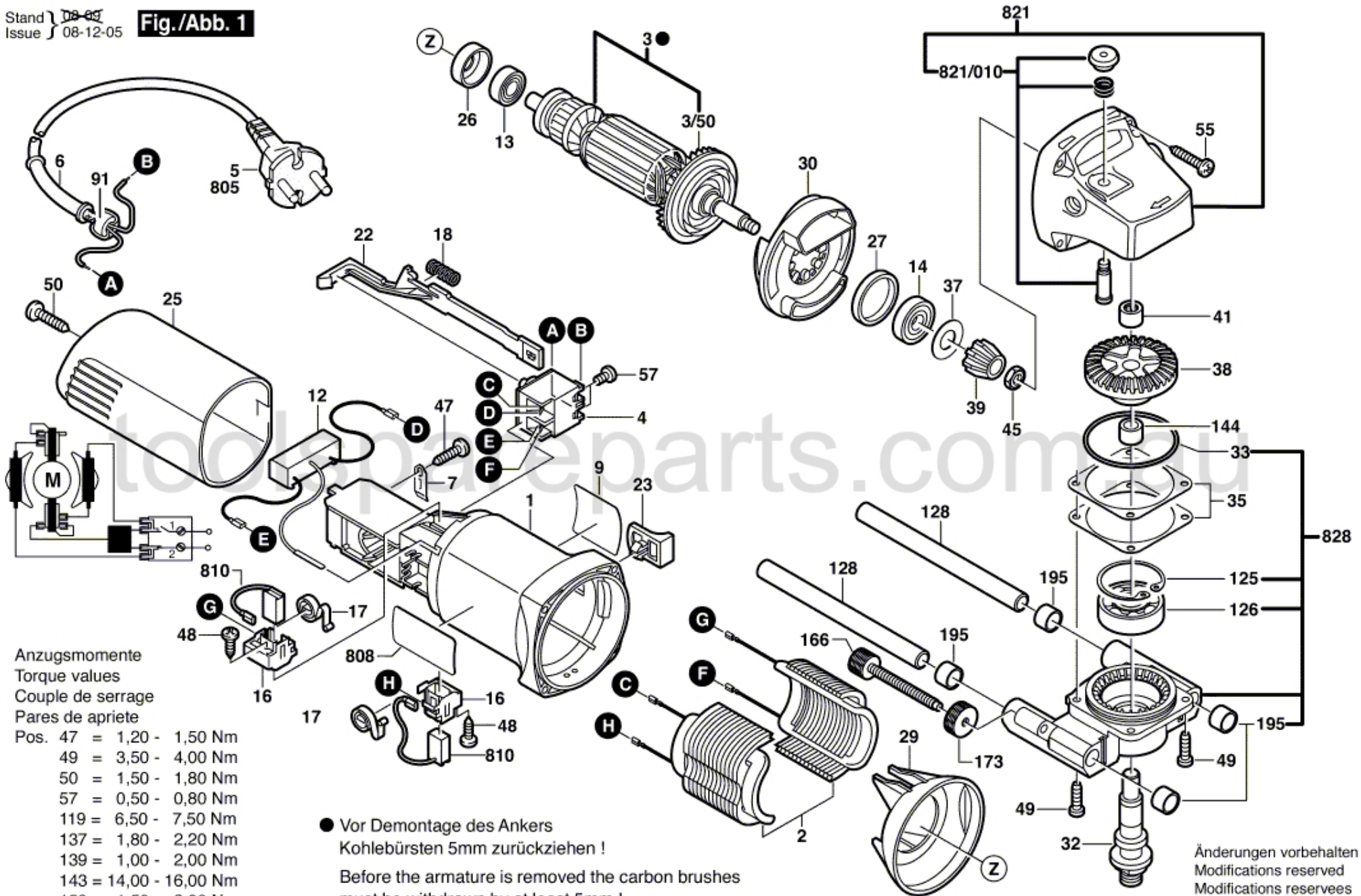


Fig./Abb. 1



Anzugsmomente
Torque values
Couple de serrage
Pares de apriete

Pos.	47	=	1,20 - 1,50 Nm
	49	=	3,50 - 4,00 Nm
	50	=	1,50 - 1,80 Nm
	57	=	0,50 - 0,80 Nm
	119	=	6,50 - 7,50 Nm
	137	=	1,80 - 2,20 Nm
	139	=	1,00 - 2,00 Nm
	143	=	14,00 - 16,00 Nm
	159	=	1,50 - 2,00 Nm

● Vor Demontage des Ankers
Kohlebürsten 5mm zurückziehen !
Before the armature is removed the carbon brushes
must be withdrawn by at least 5mm !

Änderungen vorbehalten
Modifications reserved
Modifications reserves
Salvo modificaciones